

GIRLS' SWEET 16 CHAMPIONSHIP

First Round

CALDWELL COUNTY

VS.

CALLOWAY COUNTY

March 24, 1993

Official Boxscore *** FINAL ***

Date: 03-24-93 Site:GIRLS STATE TOURNEY GM 1

VISITORS (Last Name, First)

NO.	CALLOWAY COUNTY	Tot FG		3-POINT		FT	FTA	Rebounds			PF	TP		A	TO	BLK	S	TIME
		FG	FGA	FG	FGA			OFF	DEF	TOT								
45	DARNELL, LEAH	1	9	0	0	3	4	2	4	6	5	5		1	0	0	2	23:04
55	WISEHART, MOLLY	4	9	0	0	0	2	4	3	7	4	8		0	1	0	0	27:22
31	DUNN, ANTONIA	2	2	0	0	3	4	6	4	10	2	7		0	3	1	2	29:27
13	SHELTON, VALERIE	5	20	1	2	9	11	1	2	3	1	20		3	2	0	0	32:00
22	BUCY, SUSAN	0	11	0	5	0	0	1	1	2	0	0		3	1	0	0	16:45
14	BEACH, FARRAH	3	5	1	1	0	0	1	1	2	1	7		2	1	1	1	21:32
50	RANDOLPH, K.	0	1	0	0	0	0	0	0	0	0	0		0	0	0	0	7:17
10	GEURIN, JACKIE	0	1	0	0	0	0	0	0	0	0	0		0	0	0	0	2:05
20	McCLARD, MARTI	0	0	0	0	0	0	0	0	0	0	0		0	0	0	0	0:24
25	RICKMAN, MITZIE	0	0	0	0	0	0	0	0	0	0	0		0	0	0	0	0:4
TEAM REBOUNDS (INCLUDED IN TOTALS)								5										
TOTALS		15	58	2	8	15	21	20	17	37	13	47		9	8	2	5	160
TOTAL FG	1st HALF	5/20	25.0%	2nd HALF	10/38	26.3%	GAME		15/58	25.9%	DEADBALL							
3-POINT FG	1st HALF	1/3	33.3%	2nd HALF	1/5	20.0%	GAME		2/8	25.0%	REBOUNDS		3					
FREE THROWS	1st HALF	3/4	75.0%	2nd HALF	12/17	70.6%	GAME		15/21	71.4%								

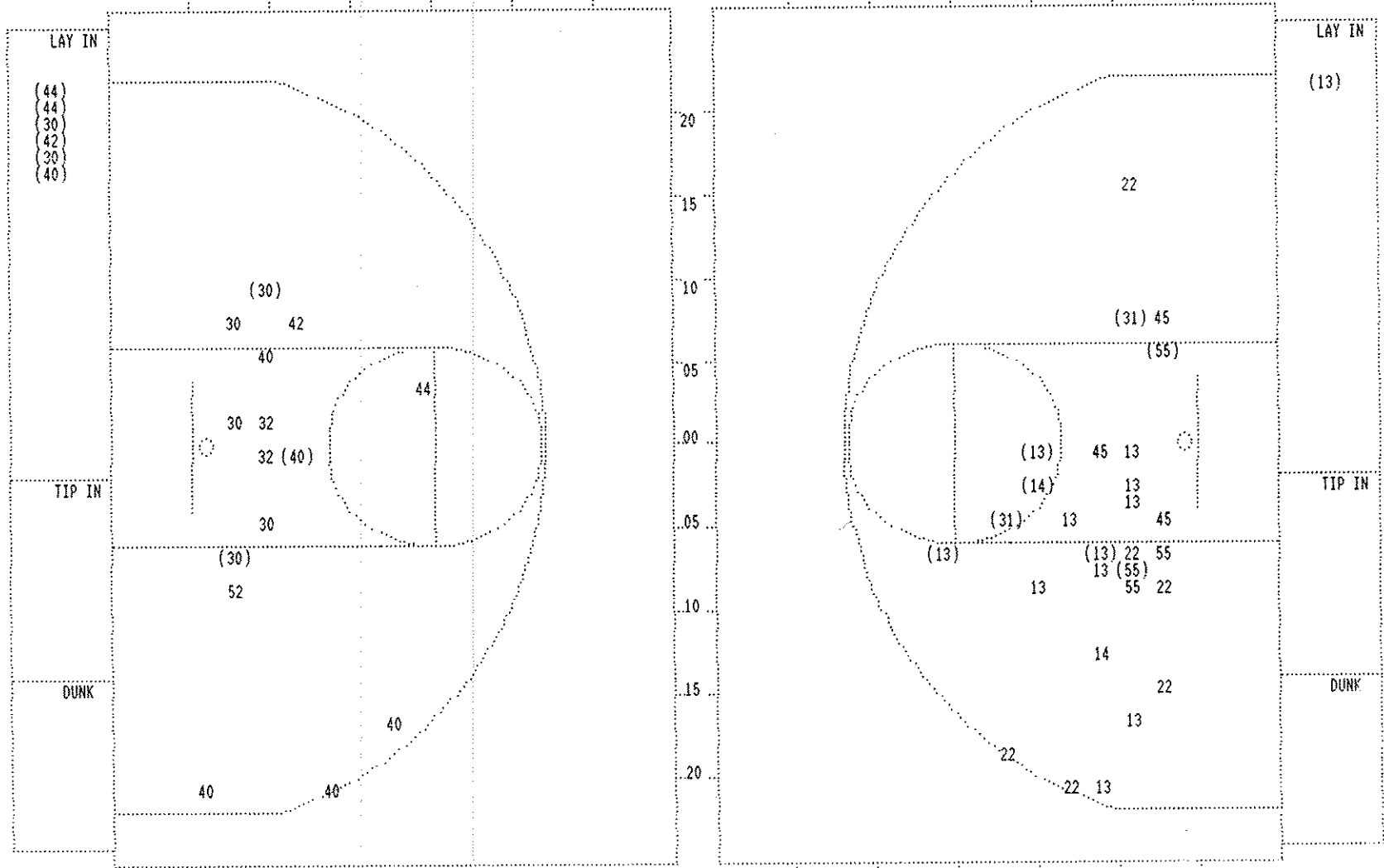
HOME (Last Name, First)

NO.	CALDWELL COUNTY	Tot FG		3-POINT		FT	FTA	Rebounds			PF	TP		A	TO	BLK	S	TIME
		FG	FGA	FG	FGA			OFF	DEF	TOT								
42	HUGHES, HEATHER	1	2	0	0	0	1	2	1	3	2	2		2	3	0	1	23:19
44	JACKSON, MELISSA	3	7	0	0	0	0	2	5	7	4	6		0	1	1	0	23:30
30	BENTON, ABBEY	6	14	0	0	1	4	3	8	11	3	13		3	4	7	2	31:36
32	GRAY, TAMEKA	1	3	0	0	1	3	2	2	4	4	3		4	4	0	0	29:52
40	SHINALL, PEPPER	7	15	3	7	2	5	2	3	5	3	19		0	2	1	0	32:00
24	FRALTEX, LESLIE	0	0	0	0	0	0	0	0	0	0	0		0	1	0	0	8:41
52	BANISTER, BRANDI	0	1	0	0	1	2	0	3	3	0	1		1	1	0	0	8:30
20	PHELPS, JENNY	0	0	0	0	0	0	0	0	0	1	0		1	0	0	0	2:08
54	JOHNSON, ERICA	0	0	0	0	0	0	0	0	0	0	0		0	0	0	0	0:24
TEAM REBOUNDS (INCLUDED IN TOTALS)								4										
TOTALS		18	42	3	7	5	15	11	26	37	17	44		11	16	9	3	160
TOTAL FG	1st HALF	5/9	55.6%	2nd HALF	13/33	39.4%	GAME		18/42	42.9%	DEADBALL							
3-POINT FG	1st HALF	2/2	100.0%	2nd HALF	1/5	20.0%	GAME		3/7	42.9%	Rebounds		6					
FREE THROWS	1st HALF	0/0	0.0%	2nd HALF	5/15	33.3%	GAME		5/15	33.3%								

OFFICIALS: STEPHEN BAUER, THOMAS HUTTON, ALT.-D. HARLOW
 Technicals: None
 SCORE BY PERIODS
 CALLOWAY COUNTY 14 10 14 9 = 47
 CALDWELL COUNTY 12 11 10 11 = 44

Attendance: 4,275
 COMMENTS: POINTS OFF TURNOVERS SECOND CHANCE POINTS
 CALLOWAY COUNTY 11 CALDWELL COUNTY 4 CALLOWAY COUNTY 12 CALDWELL COUNTY 12
 Produced by the KHSAA Sweet Sixteen Stat Crew with FINAL III - a Product of LEXICON SPORTS!®

SECOND HALF SHOT CHART Produced by the KHSAA Sweet Sixteen Stat Crew with FINAL III - a Product of LEXICON SPORTS™



CALDWELL COUNTY						
Player						
42 - HUGHES, HE	1 / 2	50.0%	52 - BANISTER, B	0 / 1	0.0%	
44 - JACKSON, ME	2 / 3	66.6%				
30 - BENTON, AB	4 / 7	57.1%				
32 - GRAY, TAME	0 / 2	0.0%				
40 - SHINALL, P	2 / 6	33.3%				
Layups	1-9 Ft	10-15 Ft	Over 15 Ft	3 Pointers	Total	
6 / 6	2 / 10	1 / 2		0 / 3	9 / 21	
100.0%	20.0%	50.0%		0.0%	42.9%	

CALLOWAY COUNTY						
Player						
45 - DARNELL, L	0 / 3	0.0%	14 - BEACH, FAR	1 / 2	50.0%	
55 - WISEHART,	2 / 4	50.0%				
31 - DUNN, ANTO	2 / 2	100.0%				
13 - SHELTON, VA	4 / 12	33.3%				
22 - BUCY, SUSA	0 / 6	0.0%				
Layups	1-9 Ft	10-15 Ft	Over 15 Ft	3 Pointers	Total	
1 / 1	6 / 18	2 / 5	0 / 2	0 / 3	9 / 29	
100.0%	33.3%	40.0%	0.0%	0.0%	31.0%	

CALLOWAY COUNTY "LAKERS" vs CALDWELL COUNTY "LADY TIGERS"
2nd Half Play by Play

PAGE : 2

Tip off at 1:00 p.m. on 03/24/93 at GIRLS STATE TOURNEY GM 1
Produced by the KHSAA Sweet Sixteen Stat Crew with FINAL III - a Product of LEXICON

Player	Team	CALDWELL COUNTY
GRAY, TAMEKA, BENTON, ABBEY, SHINALL, PEPPER, HUGHES, HEATHER, JACKSON, MELISSA		
1-1	100%	14-31 45.1% Follow Rebound by HUGHES, HEATHER
0-1	00.0%	4-11 36.3% HUGHES, HEATHER, 1 Free Throw missed
5-12	41.6%	15-32 46.8% Follow Rebound by BENTON, ABBEY
4	3	Foul on JACKSON, MELISSA Sub In: BANISTER, BRANDI Out: JACKSON, MELISSA
6-11	54.5%	16-34 47.0% 4 ft Lane Turnaround by SHINALL, PEPPER
2	4	Foul on SHINALL, PEPPER
3	5	Foul on BENTON, ABBEY
2-5	40.0%	4-12 33.3% SHINALL, PEPPER, 1 & Bonus missed 1st
7-13	53.8%	17-37 45.9% Driving Layup by SHINALL, PEPPER
3	6	Foul on SHINALL, PEPPER
1-2	50.0%	5-14 35.7% BANISTER, BRANDI, 1 & Bonus made 1st missed 2nd
S: 3		REB: 35 A: 10 BLK: 9 TO: 16 PF: 6 FT: 5-14 35.7% FG: 17-38 44.7%
		Sub In: JACKSON, MELISSA Out: BANISTER, BRANDI
1-3	33.3%	5-15 33.3% GRAY, TAMEKA, 1 & Bonus missed 1st
6-14	42.8%	18-39 46.1% 10 ft Right Side Follow by BENTON, ABBEY
2	11	Assist by HUGHES, HEATHER
4	7	Foul on GRAY, TAMEKA
S: 3		REB: 36 A: 11 BLK: 9 TO: 16 PF: 7 FT: 5-15 33.3% FG: 18-40 45.0%

Time	Score	CALLOWAY COUNTY	Player	Team
4 7:17	*35-38	BUCY, SUSAN, WISEHART, MOLLY, DARNELL, LEAH, DUNN, ANTONIA, SHELTON, VALERIE		
4 7:17		Ball to LAKERS		
4 7:17		Foul on DUNN, ANTONIA	2	5
4 7:14	*37-38			
4 6:42		Foul on DARNELL, LEAH	4	6
4 6:42		Sub In: BEACH, FARRAH Out: BUCY, SUSAN		
4 6:42		Sub In: RANDOLPH, K. Out: DARNELL, LEAH		
4 6:06				
4 6:06		WISEHART, MOLLY, 2 Free Throws missed both	0-2	00.0% 12-17 70.5%
4 5:06				
4 5:47	*39-38			
4 5:06				
4 5:06	39-39*	DUNN, ANTONIA, 2 Free Throws made 1st missed 2nd	3-4	75.0% 13-19 68.4%
4 5:03		Sub In: DARNELL, LEAH Out: WISEHART, MOLLY		
4 5:03		Sub In: BUCY, SUSAN Out: RANDOLPH, K.		
4 5:00		Sub In: WISEHART, MOLLY Out: BEACH, FARRAH		
4 5:00	39-41*	8 ft Lane Driving by SHELTON, VALERIE	4-17	23.5% 13-52 25.0%
4 4:24				
4 4:05		Foul on WISEHART, MOLLY	4	7
4 4:05		Sub In: RANDOLPH, K. Out: WISEHART, MOLLY		
4 4:05				
4 3:07	*41-41			
4 3:01				
4 3:01		Sub In: BEACH, FARRAH Out: RANDOLPH, K.		
4 2:52		Foul on DARNELL, LEAH	5	8
4 2:52		Sub In: WISEHART, MOLLY Out: DARNELL, LEAH		
4 2:52	*42-41			
4 1:43				
S: 3		REB: 34 A: 8 BLK: 2 TO: 8 PF: 8 FT: 5-14 35.7% FG: 17-38 44.7%		
		T I M E - O U T CALLOWAY COUNTY No. 1	S: 5 FT: 13-19 68.4% FG: 13-55 23.6%	
4 1:43				
4 1:34		Foul on BEACH, FARRAH	1	9
4 1:34				
4 1:24	42-43*	15 ft Lane Driving by SHELTON, VALERIE	5-20	25.0% 14-57 24.5%
4 0:57	*44-43			
4 0:42	44-45*	8 ft Left Side Driving by DUNN, ANTONIA	2-2	100% 15-58 25.8%
4 0:17		Assist by SHELTON, VALERIE	3	9
4 0:17				
S: 3		REB: 36 A: 9 BLK: 2 TO: 8 PF: 9 FT: 5-15 33.3% FG: 18-40 45.0%		
		T I M E - O U T CALLOWAY COUNTY No. 2	S: 5 FT: 13-19 68.4% FG: 15-58 25.8%	
4 0:17	44-47*	SHELTON, VALERIE, 1 & Bonus made both	9-11	81.8% 15-21 71.4%
4 0:17				
S: 3		REB: 36 A: 9 BLK: 2 TO: 8 PF: 9 FT: 5-15 33.3% FG: 18-40 45.0%		
		T I M E - O U T CALLOWAY COUNTY No. 3	S: 5 FT: 15-21 71.4% FG: 15-58 25.8%	

0-1	Tot-1	0-1	Tot-37	Rebound by HUGHES, HEATHER	4 0:00
1-2	50.0%	18-42	42.8%	9 ft Right Side Driving by HUGHES, HEATHER, missed	4 0:00
					4 0:00
					4 0:40
					4 0:17

Rebound by DUNN, ANTONIA	D-1	Tot-1	D-1	Tot-37
Sub In: GEURIN, JACKIE Out: BUCY, SUSAN				
Sub In: RANDOLPH, K. Out: GEURIN, JACKIE				

VISITORS (Last Name, First)

NO.	CALLOWAY COUNTY	Tot FG		3-POINT		FT	FTA	Rebounds			PF	TP	A	TO	BLK	S	TIME	
		FG	FGA	FG	FGA			OFF	DEF	TOT								
45	DARNELL, LEAH	1	6	0	0	3	4	2	1	3	2	5	1	0	0	1	12:36	
55	WISEHART, HOLLY	2	5	0	0	0	0	2	1	3	2	4	0	1	0	0	12:38	
31	DUNN, ANTONIA	0	0	0	0	0	0	2	1	3	0	0	0	3	0	2	13:27	
13	SHELTON, VALERIE	1	8	1	1	7	9	0	2	2	0	10	1	0	0	0	16:00	
22	BUCY, SUSAN	0	5	0	3	0	0	0	0	0	0	0	3	0	0	0	8:45	
14	BEACH, FARRAH	2	3	1	1	0	0	0	1	1	0	5	1	0	1	0	11:08	
50	RANDOLPH, K.	0	1	0	0	0	0	0	0	0	0	0	0	0	0	0	3:16	
10	GEURIN, JACKIE	0	1	0	0	0	0	0	0	0	0	0	0	0	0	0	1:42	
20	McCLARD, MARTI	0	0	0	0	0	0	0	0	0	0	0	0	0	0	0	0:24	
25	RICKMAN, MITZIE	0	0	0	0	0	0	0	0	0	0	0	0	0	0	0	0:4	
TEAM REBOUNDS (INCLUDED IN TOTALS)								4	1	5								
TOTALS		6	29	2	5	10	13	10	7	17	4	24	6	4	1	3	80	
TOTAL FG 1st HALF		5/20	25.0%	2nd HALF		1/9	11.1%	GAME		6/29	20.7%	DEADBALL						
3-POINT FG 1st HALF		1/3	33.3%	2nd HALF		1/2	50.0%	GAME		2/5	40.0%	REBOUNDS						1
FREE THROWS 1st HALF		3/4	75.0%	2nd HALF		7/9	77.8%	GAME		10/13	76.9%							

HOME (Last Name, First)

NO.	CALDWELL COUNTY	Tot FG		3-POINT		FT	FTA	Rebounds			PF	TP	A	TO	BLK	S	TIME	
		FG	FGA	FG	FGA			OFF	DEF	TOT								
42	HUGHES, HEATHER	0	0	0	0	0	0	0	1	1	2	0	1	3	0	0	7:19	
44	JACKSON, MELISSA	1	4	0	0	0	0	2	3	5	2	2	0	1	0	0	11:53	
30	BENTON, ABBEY	2	7	0	0	0	0	0	5	5	2	4	2	2	2	2	15:36	
32	GRAY, TAMEKA	1	1	0	0	1	2	1	0	1	2	3	2	2	0	0	13:52	
40	SHINALL, PEPPER	5	9	3	4	1	2	2	2	4	1	14	0	1	1	0	18:00	
24	FRALTEX, LESLIE	0	0	0	0	0	0	0	0	0	0	0	0	1	0	0	8:41	
52	BANISTER, BRANDI	0	0	0	0	0	0	0	2	2	0	0	1	1	0	0	4:07	
20	PHELPS, JENNY	0	0	0	0	0	0	0	0	0	1	0	1	0	0	0	2:08	
54	JOHNSON, ERICA	0	0	0	0	0	0	0	0	0	0	0	0	0	0	0	0:24	
TEAM REBOUNDS (INCLUDED IN TOTALS)								2	2	4								
TOTALS		9	21	3	4	2	4	5	15	20	10	23	7	11	3	2	80	
TOTAL FG 1st HALF		5/9	55.6%	2nd HALF		4/12	33.3%	GAME		9/21	42.9%	DEADBALL						
3-POINT FG 1st HALF		2/2	100.0%	2nd HALF		1/2	50.0%	GAME		3/4	75.0%	Rebounds						2
FREE THROWS 1st HALF		0/0	0.0%	2nd HALF		2/4	50.0%	GAME		2/4	50.0%							

OFFICIALS: STEPHEN BAUER, THOMAS HUTTON, ALT.-D. HARLOW
 Technicals: None

SCORE BY PERIODS

CALLOWAY COUNTY	14	10	=	24
CALDWELL COUNTY	12	11	=	23

Attendance:

COMMENTS:	POINTS OFF	TURNOVERS	SECOND CHANCE POINTS
CALLOWAY COUNTY	5	CALDWELL COUNTY	0
		CALLOWAY COUNTY	5
		CALDWELL COUNTY	5

Player	Team	CALDWELL COUNTY		
HUGHES, HEATHER, JACKSON, MELISSA, BENTON, ABBEY, GRAY, TAMEKA, SHINALL, PEPPER Ball to LADY TIGERS				
1-1	100%	1-1	100%	3 pt 23 ft Left Angle Jump shot by SHINALL, PEPPER Assist by GRAY, TAMEKA
1		1		
1-1	100%	2-3	66.6%	18 ft Right Base Line Jump shot by BENTON, ABBEY Assist by HUGHES, HEATHER
1		2		Foul on GRAY, TAMEKA
1		1		
1		2		Foul on HUGHES, HEATHER
1-1	100%	3-4	75.0%	14 ft Right Base Line Jump shot by JACKSON, MELISSA Assist by BENTON, ABBEY
1		3		
2		3		Foul on GRAY, TAMEKA
2-3	66.6%	4-7	57.1%	3 pt 19 ft Right Side Jump shot by SHINALL, PEPPER
2		4		Foul on HUGHES, HEATHER Sub In: FRALIEUX, LESLIE Out: HUGHES, HEATHER
3-4	75.0%	5-9	55.5%	17 ft Left Angle Jump shot by SHINALL, PEPPER Assist by GRAY, TAMEKA
2		4		

PAGE : 1

Time	Score	CALLOWAY COUNTY
1 7:23	0-2*	11 ft Left Angle Jump shot by WISEHART, MOLLY Assist by BUCY, SUSAN
1 7:06	*3-2	
1 6:17	3-4*	12 ft Right Base Line Jump shot by DARNELL, LEAH Assist by BUCY, SUSAN
1 6:05	*5-4	
1 5:39		
1 5:14	5-5*	DARNELL, LEAH, 2 Free Throws missed 1st made 2nd Sub In: BEACH, FARRAH Out: DARNELL, LEAH
1 5:14		
1 4:18		
1 4:18		Sub In: DARNELL, LEAH Out: BUCY, SUSAN
1 3:24	*7-5	
1 3:04	7-7*	4 ft Lane Driving by WISEHART, MOLLY Assist by DARNELL, LEAH
1 2:47	7-10*	3 pt 20 ft Right Base Line Jump shot by SHELTON, VALERIE Assist by BEACH, FARRAH
1 2:44		
1 2:43		Sub In: RANDOLPH, K. Out: WISEHART, MOLLY
1 2:26		
1 2:12		Foul on DARNELL, LEAH
1 2:04		Foul on DARNELL, LEAH
1 2:04		Sub In: WISEHART, MOLLY Out: DARNELL, LEAH
1 1:48	*10-10	
1 1:39		Sub In: BUCY, SUSAN Out: RANDOLPH, K.
1 1:13	10-12*	16 ft Right Side Jump shot by BEACH, FARRAH Assist by SHELTON, VALERIE
1 0:41		
1 0:41		
1 0:41		Sub In: RANDOLPH, K. Out: BUCY, SUSAN
1 0:41	10-14*	SHELTON, VALERIE, 2 Free Throws made both
1 0:27	*12-14	

Player	Team	CALDWELL COUNTY		
DARNELL, LEAH, WISEHART, MOLLY, DUNN, ANTONIA, SHELTON, VALERIE, BUCY, SUSAN				
1-1	100%	1-2	50.0%	
1		1		
1-1	100%	2-4	50.0%	
2		2		
1-2	50.0%	1-2	50.0%	
2-4	50.0%	3-14	21.4%	
1		3		
1-5	20.0%	4-15	26.6%	
1		4		
REB: 6	A: 3	BLK: 1	TO: 8	PF: 2
S: 0	FT: 0-0	00.0%	FG: 3-4	75.0%
No. 1 CALDWELL COUNTY TIME - 0 U T				
REB: 7	A: 4	BLK: 0	TO: 2	PF: 0
S: 2	FT: 1-2	50.0%	FG: 4-15	26.6%
No. 2 CALDWELL COUNTY TIME - 0 U T				
REB: 6	A: 3	BLK: 1	TO: 8	PF: 2
S: 0	FT: 0-0	00.0%	FG: 3-4	75.0%
1 2:44				
1 2:43				Sub In: RANDOLPH, K. Out: WISEHART, MOLLY
1 2:26				
1 2:12				Foul on DARNELL, LEAH
1 2:04				Foul on DARNELL, LEAH
1 2:04				Sub In: WISEHART, MOLLY Out: DARNELL, LEAH
1 1:48	*10-10			
1 1:39				Sub In: BUCY, SUSAN Out: RANDOLPH, K.
1 1:13	10-12*			16 ft Right Side Jump shot by BEACH, FARRAH Assist by SHELTON, VALERIE
1 0:41				
1 0:41				
1 0:41				Sub In: RANDOLPH, K. Out: BUCY, SUSAN
1 0:41	10-14*			SHELTON, VALERIE, 2 Free Throws made both
1 0:27	*12-14			

Player	Team	CALDWELL COUNTY	Time	Score	CALLOWAY COUNTY	Player	Team
FRALIE, LESLIE, JACKSON, MELISSA, BENTON, ABBEY, GRAY, TAMEKA, SHINALL, PEPPER			DARNELL, LEAH, WISEHART, MOLLY, DUNN, ANTONIA, SHELTON, VALERIE, BEACH, FARRAH				
Ball to LADY TIGERS			2	6:58			
1	5	Foul on JACKSON, MELISSA	2	5:29			
1	6	Foul on SHINALL, PEPPER	2	5:29	12-16*	SHELTON, VALERIE, 1 & Bonus made both	4-4 100% 5-6 83.3%
			2	5:29		Sub In: BUCY, SUSAN Out: DUNN, ANTONIA	
			2	5:16		Foul on WISEHART, MOLLY	1 3
1-2	50.0%	1-2 50.0%	2	5:16	*13-16		
4-8	50.0%	6-16 37.5%	2	4:23	*15-16		
2	7	Foul on JACKSON, MELISSA	2	4:07			
			2	4:07	15-18*	DARNELL, LEAH, 2 Free Throws made both	3-4 75.0% 7-8 87.5%
			2	4:07		Sub In: RANDOLPH, K. Out: BUCY, SUSAN	
1	8	Sub In: BANISTER, BRANDI Out: JACKSON, MELISSA	2	4:07			
		Foul on BENTON, ABBEY	2	3:49			
1-1	100%	7-18 38.8%	2	3:49		SHELTON, VALERIE, 1 & Bonus missed 1st	4-5 80.0% 7-9 77.7%
2	5	16 ft Circle Jump shot by GRAY, TAMEKA	2	3:28	*17-18		
		Assist by BENTON, ABBEY	2	3:00		Sub In: DUNN, ANTONIA Out: RANDOLPH, K.	
			2	2:43		Foul on WISEHART, MOLLY	2 4
1-2	50.0%	2-4 50.0%	2	2:43	*18-18		
			2	2:43		Sub In: BUCY, SUSAN Out: WISEHART, MOLLY	
			2	2:23	18-21*	3 pt 19 ft Circle Jump shot by BEACH, FARRAH	2-3 66.6% 6-27 22.2%
			2	2:08		Assist by BUCY, SUSAN	3 6
		Sub In: PHELPS, JENNY Out: GRAY, TAMEKA	2	2:06		Sub In: GEURIN, JACKIE Out: BEACH, FARRAH	
2-7	28.5%	8-20 40.0%	2	1:26	*20-21		
1	6	4 ft Lane Turnaround by BENTON, ABBEY	2	0:54	*23-21		
		Assist by BANISTER, BRANDI					
5-9	55.5%	9-21 42.8%	2	0:24			
1	7	3 pt 20 ft Right Side Jump shot by SHINALL, PEPPER					
2	9	Assist by PHELPS, JENNY					
		Foul on BENTON, ABBEY					
			2	0:24			
			2	0:24	23-22*	SHELTON, VALERIE, 2 Free Throws made 1st missed 2nd	5-7 71.4% 8-11 72.7%
			2	0:24		Sub In: McCLARD, MARTI Out: DARNELL, LEAH	
			2	0:24		Sub In: RANDOLPH, K. Out: GEURIN, JACKIE	
1	10	Sub In: JOHNSON, ERICA Out: BENTON, ABBEY	2	0:04			
		Foul on PHELPS, JENNY	2	0:04			
			2	0:04	23-24*	SHELTON, VALERIE, 2 Free Throws made both	7-9 77.7% 10-13 76.9%
			2	0:04		Sub In: RICKMAN, MITZIE Out: DUNN, ANTONIA	